

# BETHANY BULLETIN

VOL.14, ISSUE 11

www.bethany-ct.com

November 2024

\*\*\* ELECTION DAY \*\*\*

**Tuesday, November 5, 2024 in the Bethany Town Hall from 6AM-8PM**

Town Hall, Public Works/Recycling Center will be **closed** on Monday, November 11th in observance of Veterans Day and Thursday, Nov. 28th and Friday, Nov. 29th in observance of the Thanksgiving Holiday. The Recycling Center will be open Saturday, November 30th.

## From the First Selectman's Desk October Highlights and November Updates

Dear Bethany Residents,

As we say goodbye to October, I want to recognize some great things that happened this month.

The Bethany Harvest Festival was held on Sunday, October 6th. Mother Nature provided an absolutely beautiful Fall day. It was a steady crowd, and you could tell it was enjoyed by those who attended. Residents and visitors got to enjoy a variety of activities, vendors, food trucks, etc. It is no small undertaking to put on this event. It takes months of preparation. The planning committee was chaired by Janet Brunwin. Thank you to the organizers, fire department, community organizations and the many volunteers who gave so generously of their time to make it a huge success once again. Thank you to our Public Works Department for their time and energy. It truly was a team effort.

Raffle and contest prizes were also awarded. Thank you to Irma Nesson of Calcagni Real Estate for her donation of a girl's and boy's bicycle. I created four candy baskets with a wide variety of treats inside. The Bethany Lions Club donated two \$100 gift cards to Stop & Shop, and Bethany Fuel also donated a \$100 gift certificate toward a fill up of home heating fuel. **Congratulations to all the winners!**

A big thank you to Human Services Director Robin Glowa and her Assistant Emily Richard for hosting the following two events: On Wednesday, October 16th there was a Community Flu Clinic and the Senior Health and Wellness Fair. The fair is always a well-attended event. There was live entertainment, health screenings and helpful information from health-related vendors. Several vendors also provided raffle prizes and treats for the seniors. It was a great day, and the generosity of the vendors helped make this event a huge success. Thank you, vendors!

If you are a senior, make sure you check out the Bethany Seniority Page for more fun and exciting upcoming activities/events. You can also find news on how to get assistance if you're struggling with paying utility bills and other helpful information.

On Friday, October 18th, the Bethany Community School hosted their annual Pink Walk to School event to support breast cancer awareness and the Breast Center at Smilow Cancer Hospital. Led by Trooper Piccirillo, staff,



students and families dressed in pink and walked from the Amity Middle School Bethany Campus to BCS before the start of the school day. The weather was gorgeous, and it was a positive way to begin the day and weekend. Donations were made by those participating in the walk. As of the 18th, \$200 was raised. Thank you to the BCS staff and families for supporting such an important cause.

Who doesn't like a fun run? Saturday, October 19th, the PTO at Amity Regional Middle School Bethany Campus hosted a Color Fun Run. It was an absolutely beautiful day with unusually warm temperatures for this time of year. As the runners started, multiple packets of colored powder were tossed in the air covering everyone in a flurry of color. Runners followed the usual route which took a loop from the Middle School, down to and left on Bethmour, right on Pole Hill, right on Johnson, right back on to Bethmour, and left on to Luke Hill back to the school. There were runners of all ages. Approximately 120 people participated. This year they had a group of runners from the Run 169 Towns Society. For those who don't know – the Run 169 Towns Society is a group of runners dedicated to completing a race in every town in Connecticut. I was one of the 28+ sponsors for the event and was very happy to do so. There was a myriad of volunteers to help plan and execute this event, which was months in the making. Kudos to Dan DelPrete, Amber Durkin, Sandy Maher and Nell D'Andrea. The AMSB-PTO brought in approximately \$11,400, with a \$8,500 profit, which will help fund teacher grants for student programs and enrichment. The money raised is used throughout the school year for student field

*Continued on pg.2*

### Inside This Edition:

Town Hall News	Pg. 1-3
School News	Pg. 4
Bethany Seniority	Pg.5
Library Happenings	Pg. 9
Meetings Calendar	Pg. 14

*Submit stories, events, calendar dates, press releases, inquiries, advertisements, etc. to Jenn Cafasso at [BethanyBulletin@bethany-ct.com](mailto:BethanyBulletin@bethany-ct.com)  
Please hand deliver or mail all advertisements' payments and make checks payable to the Town Clerk's office located at 40 Peck Road, Bethany, CT 06524.*

*Deadline is the 15th of the previous month.*

# First Selectman's Desk

*continued from front page*

trip extras and/or assistance, if needed; teacher and staff hospitality; assemblies for students; and holiday sweets and treats for the entire school. Thank you, AMSB-PTO and all the volunteers.

Monday, October 21st started 14 days of early voting running through November 3rd for the upcoming elections for President, Vice President, U.S. Senator, Representative in Congress, State Senator, State Representative and Judge of Probate. Early voting days were held in the Commission Room at Town Hall. Absentee ballots were available beginning October 4th.

There will also be a state constitutional question on the ballot. At the November 5, 2024, general election, voters will consider a proposed amendment to the Connecticut Constitution dealing with no-excuse absentee voting. The question is: "Shall the Constitution of the State be amended to permit the General Assembly to allow each voter to vote by absentee ballot?" In accordance with Article Sixth of the amendments to the Connecticut State Constitution, this proposed amendment was approved by the General Assembly and is to be voted upon by the electors of each town at the state election on Tuesday, November 5, 2024. If a majority of those voting on the proposed amendment approve it, the amendment becomes part of the State constitution.

The Registrars of Voters and Town Clerk's office share responsibilities for local elections management. In addition to adding, modifying and removing electors from the voting list, the Registrars are in charge of recruiting, training and supervising poll workers, voting machine set-up and most other duties on Election Day. The Town Clerk coordinates ordering ballots, provides election information to residents, issues absentee ballots and receives election results after voting is complete.

The week of October 21st, the Bethany Community School PTO held one of its favorite events during Parent-Teacher Conferences – the Scholastic Book Fair. It is always greatly anticipated and well supported. Students get a chance to visit and pick out some of their favorites, and parents might do a little early holiday shopping. Thank you to the many volunteers who help with this event.

Friday, October 25th was the annual Fire Department's Trunk or Treat festivities. Local organizations, businesses and families set up vehicles and tables decorated in a variety of themes. Adults and children alike dressed in fun and scary costumes. Thank you to our volunteer fire department and local sponsors for hosting such a fun community event.

Now welcoming November – Some additional reminders: I repeat some information because I feel it is important enough to list again for everyone's safety and wellbeing.

It's never too early to begin preparing for the heating season. Make sure your furnace has been inspected and serviced; and have your chimney and vents cleaned and inspected (buildup of creosote is a leading cause of chimney fires). If you use portable heaters, always plug them directly into an outlet (do not use extension cords) and place them at least three feet from anything that can burn. Safest way to know it's off when not in use – unplug it. Test your smoke and carbon monoxide alarms. We want everyone to have a safe winter.

Remember to make sure your residence is properly identified on your mailbox and/or house. Shared driveways should have clear direction to each house. Long driveways should have ample clearance on both sides of the driveway for emergency vehicles to access the residential property. Valuable time can be lost in the case of an emergency. November and December are peak times of the year for holiday fires because of the use of holiday lights, candles, etc. For more information on safety tips go to: [www.nfpa.org/FireSafeHolidays](http://www.nfpa.org/FireSafeHolidays). NFPA is the National Fire Protection Association.

As we have experienced, Mother Nature can be finicky so you never know when it will snow. Here are some early reminders from the Public Works Department – Snow plowing reminders/rules:

-Blocked driveways – Snowplows may push snow in front of residential driveways. It is the homeowner's responsibility to clear access to their driveway. To avoid repeatedly clearing, it is recommended to wait until plowing is done.

-Do not shovel or snow blow snow from the driveway into the road.

-Mailbox damage – The Town will repair or replace mailboxes and/or posts that are struck by a plow blade, not ones damaged by the force of plowed snow. Plastic posts and mailboxes may not withstand the force of the snow. A recommendation is a 4-inch by 4-inch wooden post or 2-inch metal pipe, with a metal mailbox.

-Private plowing – Private plow contractors cannot push snow from private driveways or parking lots into the street. If there is no option but to put the snow in the street, the private plow must re-plow that part of the road until it is clear.

-Do not pull cars into the road and clear snow off of them in the road.

-Parking – No vehicles should be parked on the road during a snowstorm. This impedes the plow trucks from properly clearing the roads.

-Snow stakes – Snow stakes can be installed along the edge of a property to help distinguish the property from the pavement. The stakes should be 30-36 inches high. Wooden stakes should have the top three (3) inches painted red to increase visibility.

-As the winter season approaches, you may see Public Works going out and putting up what appear to be random stakes around town. Please know that they serve a purpose and will be removed when the winter season ends.

-Do not place garbage pails/bins in the road. They should be kept in your driveway.

-Any questions or concerns should be directed to the Public Works Department – 475-238-6966.

Just a few additional reminders to keep you safe during the winter and holiday seasons: If you park your car outside, always make sure your entire car is cleaned off before leaving your driveway. Besides the roof and hood, all windows and lights should be completely cleared of snow/ice. You want to be able to see and be seen.

Are you signed up for emergency phone alerts? The Town has been partnered with CodeRed to help residents stay safe and connected in case of a town-wide emergency. Sign up at the link below to receive important emergency information that might impact the Town.

Why CodeRed? Such systems are only as good as the telephone database supporting them. If your phone

number is not in the database, you will not be called. One of the reasons the CodeRed system was selected is that it gives individuals and businesses the ability to add and update their own phone numbers directly in the system's database. No one should automatically assume his or her phone number is included or that a recent phone number change has been updated in CodeRed. Required information includes first and last name, street address (no P.O. boxes), city, state, zip code, and primary phone number, additional phone numbers can be entered as well.

All businesses should register, as well as all individuals who have unlisted phone numbers. Anyone who has changed their phone number or address within the past year and those who use a cellular phone or VoIP phone as their primary number should verify the information in CodeRed. CodeRed allows geographically based delivery, which means street addresses are required to ensure emergency notification calls are received by the proper individuals in a given situation. The system works for cell phones too, but an associated street address is needed to receive relevant messages. CodeRed gives those who want to be included an easy and secure method for inputting information. The data collected will only be used for emergency notification purposes by ECN and not made available for any other use. To sign up go to: <https://bethany-ct.com/phone-alerts>. There is also a link on the page for frequently asked questions about CodeRed.

Now starts the season of giving. Please check out the notice in this month's Bulletin from TEAM, Inc. Help make the magic happen! You can also visit: [www.team-inc.org/toys4kids](http://www.team-inc.org/toys4kids) for more information or to donate online

or see their wish list for suggested items.

During November let's remember to thank our Veterans for their service. Schools will be open on Monday, November 11th.

**Remember – Tuesday, November 5th is Election Day!**



WISHING EVERYONE A VERY HAPPY THANKSGIVING



*The Thankful Heart Opens Our Eyes to a Multitude of Blessings that Continually Surround Us.*  
-James E. Faust

\*\*\*\*\*

# Your One-Stop Shop For

**LOCK STOCK & BARREL**

**ORGANIC FEED**

**POWER EQUIPMENT**

**PET FOOD & SUPPLIES**

**CLOTHING & MORE**

**RIDING APPAREL**

**TACK**

## What Can We Feed Or Fix For You?

770 Amity Road, Bethany, CT | [lsbfarmsupply.com](http://lsbfarmsupply.com) | (203) 393-0002 |

## From the Superintendent of School's Desk

Dear Community Member,

The "C" in BCS stands for Community, and this year, our connection and partnership with families, teachers, and students has been stronger than ever. We take pride in our close-knit community, and October has been a prime example of this collaboration.



October is always a busy month at Bethany Community School (BCS). This year, we hosted our annual Open House, supported by local organizations such as B&B Transportation, Chartwells, our PTO, the Girl Scouts, and the Historical Society. Their participation truly reflects the spirit of community we cherish.

In partnership with the Bethany Volunteer Fire Department (BVFD), we observed Fire Prevention Month. BVFD presented fire safety lessons to our students, served lunch in the cafeteria, and even conducted a live burn demonstration. Additionally, local law enforcement, fire personnel, and school administration conducted a series of both announced and unannounced emergency drills to ensure student safety.

October also marks Breast Cancer Awareness Month, and our BCS community came together for Pink Day, starting with a Walk-to-School event to raise funds for breast cancer research. It was a powerful reminder of how our school comes together for a common cause.

We continued our engagement with families and community members through events like Fall Parent Conferences, the PTO Book Fair, and Halloween-themed activities, including the Bethany Fire Department's Trunk or Treat event. Additionally, the

Bethany Board of Education hosted an Open Forum, offering families and community members the opportunity to discuss school-related topics.

At BCS, we continuously strive to enhance the learning experiences for our students. We're excited about our partnership with the Jamie A. Hulley Foundation, which has generously supported various programs this year, including a theater program for our younger students.

As we move into November, we anticipate celebrating important occasions like Election Day, Veterans' Day, American Education Week, and Thanksgiving. Our community takes pride in honoring our veterans, and we invite local veterans to visit BCS and share their stories with our students on Veterans' Day. If you are a veteran interested in participating, please contact Ms. Nathman at [jnathman@bethany-ed.org](mailto:jnathman@bethany-ed.org).

November 18th marks the beginning of American Education Week, a time to recognize the hard work of everyone who contributes to public education. As part of the celebration, on November 21st, BCS will host "Educator for a Day," during which community members will join us for a read-aloud event.

November is a time for gratitude, and I want to take this opportunity to express my heartfelt thanks to our teachers and staff who make BCS a wonderful environment for our children. I also extend my deepest appreciation to our families and community members for your ongoing support of our students and school.

As always, I welcome any questions, concerns, or ideas. Please feel free to reach out to me at (203) 393-1170 or by email at [kbyrd@bethany-ed.org](mailto:kbyrd@bethany-ed.org).

In gratitude,

Kai Byrd  
Superintendent

## From the Fire Marshal's Desk

October and November are the time of year when the temperatures get cold at night, and everyone likes to sit by a campfire and relax. While this is acceptable to do with an approved fire pit, the State of Connecticut requires you to follow the guidelines for open burning. This means if the State Forest Fire Danger is High or above, you may not burn a campfire. This is to prevent accidental fires that, due to the dry conditions, can get out of control and spread rapidly. To check the forest fire danger level, just search on your computer for State of Connecticut forest fire danger. IF you have any questions in regard to campfires or any other type of open burning, you may contact me at (203) 393-2100 Extension 1119.



# Bethany Seniority

By Robin Glowa

November 2024

"Living in a state of gratitude is the gateway to grace." — Arianna Huffington

Bethany Town Hall will be closed Monday, November 11th in honor of Veteran's Day and Thursday, November 28th and Friday, November 29th for Thanksgiving  
No Senior Bus Transportation on Monday, November 11th or Friday, November 29th

## SENIOR LUNCH!

Senior Lunch is held every *Wednesday at Noon* at Bethany Town Hall. Reservations must be made by the Wednesday prior at 203-393-2100 x1124.

\$9.00 per person.

(Please pay in exact cash when you arrive.)

## NOVEMBER ENTREES:

NOV. 6th: **BRUNCH FOR LUNCH**  
(Blueberry Pancakes)

NOV. 13th: **MUSHROOM BARLEY SOUP**  
**CORNED BEEF**

(Guest Speaker: Sandy Gifford- Safety Products for Seniors)

NOV. 20th: **GREAT TURKEY TAKE-OUT**  
Reserve meals by November 6th

NOV. 27th: **NO LUNCH**

## **FREE FRIDAY FILM FESTIVAL**

**"PLANES, TRAINS & AUTOMOBILES"**  
**FRIDAY, NOVEMBER 15th at 11:00 AM**  
**Bethany Senior Center**

Don't miss this hilarious holiday classic starring Steve Martin and John Candy.

Please call to reserve a seat 203-393-2100 x1124

**NEXT FILM: December 18th at 11AM**  
**Center Station**

**"WHITE CHRISTMAS"**

This amusing and touching holiday classic stars Bing Crosby, Danny Kaye, Rosemary Clooney and Vera-Ellen

## SAVE THE DATE! HOLIDAY LUNCHEON

Friday, December 6th NOON-1:30 PM  
Bethany Town Hall Gym

Cranberry Apple Pork Loin, Roasted Red Potatoes,  
Honey Glazed Carrots, Peas & Pearl Onions, Dinner Rolls, Sweet Potato Cake

\$13.00 per meal

RSVP by Friday Nov. 22nd 203-393-2100 x1124

## SENIOR CRAFT CORNER

Sponsored by Bethany Human Services

MONDAY, NOVEMBER 18th  
11 AM

Bethany Senior Center

### **Fall Leaf Frames**

We will be decorating wooden frames to create a beautiful keepsake photo frame!

Reserve a seat by November 5th 203-393-2100 x1124

## **GREAT TURKEY TAKE-OUT**

Full Thanksgiving dinner prepared and packed to take home!

**Wednesday, November 20, 2024**

Pick up between Noon-1:00 PM

Bethany Town Hall Lobby

Roast Turkey with Gravy, Cornbread Stuffing, Mashed Potatoes, Sweet Potato Casserole, Green Beans with Red Pepper, Dinner Roll, Pumpkin Pie

\$13.00 per meal Pay in exact cash at pick-up

Reserve your meal(s) by November 6th  
203-393-2100 x1124

## STRUGGLING TO PAY YOUR ELECTRIC BILL?

Eversource has programs that may help.

Call 800-286-2828 or visit [Eversource.com/BillHelp](https://www.eversource.com/BillHelp) to find out if you qualify for Protection from Shutoff, Medical Protection or Matching Payment Programs. Eversource also offers Home Energy Solutions at 1-877-947-3873.

## FOOD ASSISTANCE FOR BETHANY RESIDENTS

Christ Church Bethany and Woodbridge is offering Bethany residents contactless, front-door delivery of nonperishable goods. **Contact Christ Church at 203-393-3399. Leave your name and phone number.**

# BETHANY LAND TRUST



## American Chestnut Trees Planted In Hall Preserve

An opportunity arose to plant trees in the Hall Preserve, an 8-acre mostly wooded parcel on Downs Road. Working closely with neighbors who abut the parcel, several blight-resistant American chestnut trees (*Castanea dentata*) were planted. The specimens were purchased from a local nursery and positioned in spots chosen to provide ample opportunity to thrive. The saplings were surrounded with wire fencing for protection from foraging animals. Currently, two of the saplings are doing well.

The story of the American chestnut and its relationship with humans is a tale of bounty, tragedy, and ultimately, of hope and redemption. Once dominating portions of the eastern U.S. forests, the American chestnut numbered nearly four billion trees and was among the largest, tallest, and fastest-growing in these forests.



The nuts provided an abundant food source, and Indigenous Peoples responded in kind by managing the landscape to improve habitat for chestnuts. Humans benefitted not only from the chestnuts themselves, but from the immense opportunities they created for wildlife. European settlers learned that chestnut wood was rot-resistant, straight-grained, and suitable for furniture, fencing, and building materials.

The chestnut blight, a fungus introduced to the U.S. in the late 1800's, has decimated the American chestnut population. Those trees that sprout from stumps will grow for a few years but eventually succumb to the blight. Organizations such as the American Chestnut Foundation are working to develop a blight-resistant American chestnut tree through scientific research and breeding, and to restore the tree to its native range in the eastern United States.

Let's hope those the Land Trust has planted can be part of that resurgence.

**Monthly Hikes:** Beaver Habitat Hike, Sunday November 3, 1 – 3 PM.

Come learn about the positive effect of beavers upon the environment. Ali Beres-Nork, an Environmental Science teacher at Amity Regional High School and

Bethany Land Trust board member, will serve as our guide as we hike through the very active beaver habitat in Mendell's Folly. We'll view beaver lodges, a beaver dam, and discuss the installation of the beaver flow system that helps maintain beaver pond water levels.

We will meet at the roadside parking area at the Van Epps Preserve at 390 Beacon Road (Route 42) in Bethany at 1:00 PM. Look for the green Land Trust banner. Off-road parking is also available.

All are welcome but space for the hike will be limited to 25 registered participants. No dogs will be allowed and inclement weather will cancel.

To register: contact Bob Harrison by Friday, November 1st via cell at 203-506-5888 or [bjh51box@gmail.com](mailto:bjh51box@gmail.com)

Fall Educational Program: "The Bear Reality", Friday, November 15th, 7PM

Felicia A. E. Ortner, Connecticut Master Wildlife Conservationist, will present an educational program called "The Bear Reality" at the Lakeview Lodge, 265 Beacon Road (Route 42) in Bethany. Felicia has been studying about bears for almost 30 years. In the mid 1990's Felicia turned her passion for learning about bears into a passion for teaching about them. Her intent is to help dispel misunderstandings about bears and discuss strategies for coexistence with humans and bears.

Bob Harrison  
Bethany Land Trust Trails Chair

Children Welcome to a Presentation on  
**BLACK BEARS**



Presented by Felicia Ortner,  
Connecticut Master Wildlife Conservationist

**Friday, November 15, 2024**  
**7:00 PM**

**Lakeview Lodge**  
Veterans Memorial Park Bethany  
**\* Free Refreshments \***  
Made Possible by  
**The Bethany Land Trust**



<http://www.bethanylandtrust.org/>

## *It Happened In Bethany*

*Part II Bethany Volunteer Fire Department in the 1970's*  
By Linda Wooster

A variety of notable incidents were recorded in Bethany Volunteer Fire Department History during the 1970s.

In December 1973, the “Big Ice Storm” created a heavy coating of ice, toppled trees and snapped branches across powerlines and roads all over Bethany. Despite freezing temperatures and hazardous conditions outside, firemen worked around the clock to clear roads, create a shelter and operated portable generators so residents could run their furnaces for short periods. In addition, on the fourth day, the firemen had to handle a home fire.

The department celebrated its 40th anniversary in November 1974 and approximately a year later anticipated the arrival of CMED (Central Medical Emergency Dispatch). CMED connected commercial and volunteer ambulances by radio with the hospitals in New Haven and allowed ambulance crew members to talk directly with doctors.

1975 was the busiest year to date for the BVFD as overall fire and ambulance activity was up more than 39% over 1974. One of the most dangerous fires of the year occurred under a triple row of 115,000 V high tension lines where they crossed Hoadley Road, creating the serious potential for electrocution of firefighters.

In September 1976, the Bethany firemen put down one of the largest fires in Bethany history at a business on Old Amity Road. Firemen used water from Countryside Swimming Pool Club (next to the current Teddy B’s) to douse the blaze. Three months later, another fire started at the same site when a worker tried to thaw frozen water pipes with a torch. Firefighters’ efforts were hampered by 15° temperatures and 40 mph winds that spread the flames.

The BVFD women’s auxiliary, which had been re-organized in 1972 after a period of inactivity, helped raise money by conducting two dances a year, a beer and pretzel party, a movie night, tag sales, and cookbook sales. Auxiliary donations were used to purchase a rescue truck, Rescusi-Annie (for teaching and practicing CPR), a 16mm sound movie projector (for showing training films), a new meeting-room floor at Center Station, an industrial vacuum, folding chairs, lettering for Hinman station, drapes for both stations, and a parade trumpet.

The biggest priority for 1978 was the expansion of the Center Firehouse and the replacement of an over-

aged, undersized rescue vehicle. In April, the BVFD asked the Town for a new emergency truck and an expansion to the Amity Road firehouse at a cost of \$85,000. The emergency truck would replace a vastly outmoded 1961 telephone truck which fireman had outfitted to use as an emergency vehicle in 1974. According to Assistant Chief George Quinn, “the doors on the garage we have now are 10’ wide; when we back the big truck in, we have about enough space for a pack of cigarettes between the trucks, mirrors, and the walls.” To be continued....

**BVFD celebrated 90 years  
of service to the town in 2024.**

### **Bethany Historical Society Holiday Tree Lighting**

**Sunday, December 1**

**6:00pm**

**BH5 Russell Homestead**

**20 Round Hill Road, Bethany**



### **A Historical Walk Through Bethany**



The Clark Memorial Library and Bethany Historical Society are creating a visual exhibit highlighting the everyday life of Bethany residents, throughout the decades.

The exhibit will feature photos shared by the community which will be displayed for all people to “walk through.”

The exhibit will be open to the public at the Library’s Community Room in January.

### **Scanning Hours For Personal Photos**

We will scan your photos at the Library on:

**Saturday, November 23 2-3:30**

**Thursday, December 1 5-6:30**



### **OPEN HOUSE**

**Bethany Historical Society Museum**

**Come see our newly renovated Old Town Hall**

**Sunday, November 10th**

**11:00AM-1:00PM**

**512 Amity Road, Bethany**

# Sustainable Bethany

**No. 47. Letter from Sustainable Bethany. Copernicus, Beech Leaf Disease, Book, Small Bins, November Night Skies.**

**Copernicus (Europe's eyes on earth):** An international collaboration under the leadership of the European Centre for Medium-Range Weather Forecasts (ECMWF) with a "core objective to provide reliable access to high-quality climate data." They provide climate apps, support, news, information, videos, animated maps etc. and are well worth a visit. Their link is <https://climate.copernicus.eu/> You can take a deep dive into everything weather. Start with their Climate Bulletins.

**Beech leaf disease update (BLD):** The foliar nematode *Litylenchus crenatae* ssp. *mcannii* (Lcm) causes beech leaf disease. In 2012 an unidentified "disease" appeared in Ohio's American beeches. The nematode had not yet been detected. Though suspected for several years, it was not confirmed until 2019. The nematode spread quickly across the northeast. Note, when the above-ground portion of a tree appears to die, the roots remain alive for decades, thus the tree is not dead! Other than European beech, BLD is not damaging *Fagus crenata* or *F. orientalis* trees. To protect your trees, The Connecticut Agricultural Experiment Station (CAES) suggests a 1:1 mix of water with polyphosphate (phosphate) e.g., 1 cup of polyphosphate with 1 cup of water, sprayed on trunks from a height of 9-12 feet down to the ground. Treatment 2-times/year; mid-June and late August. It can be purchased in many Connecticut garden centers. Thanks to Dr. Robert Marra of CAES for this information.

**Book:** "Paved Paradise: How Parking Explains the World" by Henry Graber

There are now about six parking spots for every car in the United States. In this fascinating book about parking, Henry Graber examines how much of the development projects in cities, as well as development failures, are traced directly back to parking regulations. Parking minimums require housing developments to have a certain number of spaces - which causes increased construction costs and sprawl. Office complexes parking minimums far exceed the number of spaces required for the workforce. Reduction of these "minimums," by shared use facilities for example, could lead to lower rents, more housing, and pleasant walkable cities. Additionally, the paradigm of parking pricing is backwards. The closer curbside parking is cheaper than parking garages further away. It's no wonder that in some cities about 30% of drive time is spent looking for parking. We want our parking to be convenient, available and cheap –

and this fixation on parking has transformed our streets and cities.

**Small Trash Bins:** We have heard reports of some of the younger folks in town helping their older neighbors with long drives by towing the large bins using their ATV's! We thank those helpful neighbors. If you want a smaller bin, please call Jennifer Cafasso at Town Hall [Jcafasso@bethany-ct.com](mailto:Jcafasso@bethany-ct.com) or 203-393-2199 ext. 1100.

**November Night Skies:** Twilight is the time between the sun setting and light fading. Twilight is longer in winter than summer due to several factors. Though it may get darker earlier in fall and winter, we have more time to enjoy sunsets and twilights.

Between the autumnal equinox, September 21st and winter solstice, December 21st there are three full moons e.g., Oct. 17-Hunter's Moon, Nov. 15-Beaver Moon, and Dec. 15-Cold Moon.

The bright planets return this autumn. Saturn is visible all night long. Look for its yellow glow in the southeastern sky as evening twilight ends. With a telescope, you may wonder what happened to the planet's stately rings. They look like spikes sticking out of the planet's sides. Saturn reaches one of its equinoxes next spring and its rings will seem to disappear!

Venus after sunset will be dazzling as autumn progresses and by November should be easy to spot in the southwestern sky. It will remain a bright beacon in the evening until well into the new year.

Jupiter reaches opposition on Dec. 7th and be prominently placed among the bright stars that form the Winter Circle asterism (star pattern). Jupiter is a treat using a telescope. Its four bright Galilean-moons shift positions each night, and modest instruments can show its Great Red Spot, a storm system the size of the Earth that's persisted for over 300 years.

Did you see the celestial highlight of the season? One was an object named "Comet A3 Tsuchinshan-ATLAS," discovered January 2023? It displayed cometary activity far from the sun. Speculation, if it survives its closest approach to the Sun, is that it would be visible to the unaided eye in October. How about the Northern Lights – visible in CT on October 10th. What a show that was!

Happy Thanksgiving Everyone!

Gale Ridge  
Co-chair Sustainable Bethany

Michael Kaloyanides and Eric Frieden contributors.

[sustainablebethany@gmail.com](mailto:sustainablebethany@gmail.com)

Recycle Center hours: Tuesday-Saturday 7:30AM-3:00PM.

Bulky waste appointments: (203) 393-1555.



## COMMUNITY BREAKFAST

Mark your calendar for our annual  
Community Breakfast hosted by the  
Bethany Republican Town Committee.

This is an all-you-can-eat breakfast at Bethany Town  
Hall on Sunday, November 3rd,  
7:30a.m to 11:00a.m.

**Tickets** \$12.00 for adults and \$6.00 for children.  
Tickets available at the door.

## ANNUAL PUMPKIN & HOLLY FAIR

Christ Episcopal Church - 526 Amity Road (Rt. 63)  
The annual Pumpkin and Holly Fair, Saturday, No-  
vember 23rd, 9a.m.-2p.m. You'll find bargains on  
holiday decor, fabulous baked goods, a clothing  
boutique, gift basket raffles, and delectables at the  
Country Store - Vermont cheese, pickles, relishes,  
pierogis, and more. Stop and enjoy lunch at the cafe.

You don't want to miss it!



**FULL MAILING & PRINTING SERVICES**  
**CUSTOM TOWN WIDE & TARGETED MAILINGS**  
**LETTERS, ENVELOPES, POST CARDS, FLYERS**  
**BROCHURES, NEWSLETTERS, MENUS, SELF**  
**MAILERS, ANNUAL REPORTS, APPEAL MAILINGS**  
**NOTE PADS, MULTI-PART CARBONLESS FORMS**  
**INVOICES, RECEIPTS CONTRACTS, WRAP AROUND**  
**RECIPT BOOKLETS, PERFORATING, CUTTING**  
**NUMBERING, MEDICAL FORMS, PROGRAM**  
**BOOKLETS, CATALOGS, DIRECTORIES, POSTERS**  
**BANNERS, LETTERHEAD, LAWN SIGNS, SANDWICH**  
**BOARDS, PRINTING FOR SMALL BUSINESSES**  
**GROUPS, POLITICAL, RELIGIOUS ORGANIZATIONS**  
**SCHOOLS, MUNICIPALITIES & MORE!!!**

### Quality Printing Personal Service

16 Research Dr., Woodbridge, CT 06525

**(203) 389-4452**

**joyceprinters@outlook.com**

# Check It Out !

*November 2024*  
**Clark Memorial Library**

Check our website and online calendar for a  
full list of programs and activities.

<http://bethanylibrary.org>

### A Historical Walk Through Bethany

Clark Memorial Library and the Bethany Histor-  
ical Society are working together to create A Historical  
Walk Through Bethany, an exhibit highlighting the visual  
history of the Town of Bethany through the years. The ex-  
hibit will feature photos shared by the community, which  
will be scanned, enlarged, matted, and arranged by decade  
in the Library's Community Room, allowing visitors to  
"walk through" the everyday lives of Bethany residents.

A few photos have already been collected, and are  
on display across from the glass display cabinets outside  
the Community Room! Be sure to stop by and get a  
glimpse of how life in Bethany has changed over time.

The Library will be hosting Photo Scanning Days  
on November 23rd and December 10th to collect images  
for the final exhibit. For more information about these  
events, and the exhibit as a whole, see the Library's Cal-  
endar of Events.

### **Sustainable Bethany offers Well Testing at the Library!**

On Saturday, November 16th from 10AM-1PM  
the UCONN mobile testing lab will be parked in the li-  
brary parking lot. Test kits may be picked up and returned  
on the same day to the mobile lab. Results will be mailed.  
The cost is \$200.

### Arts@Clark!

Local artist Roberta Scott will present an exhibit  
of abstract multimedia, including paint, textile, line, and  
paper from October 5th – December 6th

Join us for a reception and meet the artist on No-  
vember 16th from 3PM-4:30PM in the Library Commu-  
nity Room.

**Thanksgiving Hours: The Library will close at 3 PM on  
Wednesday, November 27th and reopen on Saturday No-  
vember 30th at 10:30 AM.**

Library Hours

Tues/Wed/Thurs 10:30AM - 7PM

Friday/Saturday: 10:30PM - 5PM



## TEAM TOYS 4 KIDS 2024

TEAM is seeking NEW toys for children ages newborn to 12 years old \*Toys MOST needed: for age range 0-18 months and pre-teen girls\*

You may also donate monetarily or shop on their Walmart Wish List and purchase toys that will be shipped directly to TEAM!

To donate online or shop the wish lists go to: [www.teaminc.org/toys4kids](http://www.teaminc.org/toys4kids)

TEAM Toys 4 Kids supports nearly 2,000 children from low-income families, right in local communities.

For more information or questions contact Lilly at: [lmckenzie@teaminc.org](mailto:lmckenzie@teaminc.org) or (475) 223-2214.



### INFORMATION REGARDING WEEKLY TRASH PICK-UP

You can sign up for text alerts – text BETHANY to 203-334-1660 to be added to their holiday and weather-related schedule change Alert System.

You can also sign up to receive email notifications on their website: <https://residentialwastesystems.com> If you need to email RWS, put BETHANY in the subject line.

Their email address is: [info@residentialwastesystems.com](mailto:info@residentialwastesystems.com).

**NOTE: ALL CUSTOMERS, PLEASE HAVE YOUR TRASH OUT THE NIGHT BEFORE YOUR PICK UP DAY (EVEN IF IT'S NOT A HOLIDAY OR WEATHER-RELATED). STORING/SECURING YOUR TRASH IN PROPER BINS OR PAILS COULD HELP AVOID YOUR TRASH FROM BEING RUMMAGED THROUGH BY ANIMALS.**

### Residential Waste Systems Trash Pick Up Reminder

**Thanksgiving Day 2024:** Thursday Pickups delayed one day

**Christmas Day 2024:** Wednesday/Thursday Pickups delayed one day

**New Year's Day 2025:** All Pickups delayed one day.

## Presidential Election November 5, 2024

An election for President & Vice President, U.S. Senator, Representative in Congress, State Senator, State Representative and Judge of Probate will be held on Tuesday, November 5, 2024 between the hours of 6:00 am and 8:00 pm at the Bethany Town Hall, 40 Peck Road. There will also be a state constitutional question on the ballot. For more details, please visit [bethany-ct.com/election-information](http://bethany-ct.com/election-information)

In addition to Election Day, Early Voting will be available between October 21st to November 3rd. Early Voting days and hours will be as follows:

- Wednesday, October 30, 2024: 10:00 am to 6:00 pm
- Thursday, October 31, 2024: 8:00 am to 8:00 pm
- Friday, November 1, 2024: 10:00 am to 6:00 pm
- Saturday, November 2, 2024: 10:00 am to 6:00 pm
- Sunday, November 3, 2024: 10:00 am to 6:00 pm

Early Voting will take place in the Commission Room at the Bethany Town Hall. Please bring your ID with you to vote.

For any questions about voter registration, please contact the Registrar of Voters at 203-393-2100 x.1121 or [registrar@bethany-ct.com](mailto:registrar@bethany-ct.com)

Absentee Ballots will be available for the election beginning on October 4, 2024. For more information about absentee ballots, please contact the Town Clerk's Office at 203-393-2100 x.1104 or [townclerk@bethany-ct.com](mailto:townclerk@bethany-ct.com)

To register to vote online, check your voting status, get more information about Early Voting, or request an absentee ballot online, please visit [myvote.ct.gov](http://myvote.ct.gov)

### Need a ride on Election Day, November 5th?

No worries, a BRTC (Bethany Republican Town Committee) member will be happy to escort you.

Choose a time that works best for you.

**9:00a.m. - 11:00a.m. or 3:00p.m. - 5:00p.m.**

**Please call 203-685 0460 and ask for a ride.**

**GET INVOLVED!**  
**VOLUNTEER POSITIONS AVAILABLE!**

**Call for Volunteers:**  
**Solid Waste and Recycling Committee**

The Town is seeking volunteers to serve on a new committee tasked with developing a comprehensive **Solid Waste and Recycling Strategic Plan**. The Committee's mission is to create sustainable, cost-effective solutions that reduce waste, improve recycling efforts, and promote financial responsibility in managing our town's resources.

If you're passionate about sustainability and fiscal responsibility, here is your chance to contribute. Help us craft a plan that balances environmental stewardship with smart financial strategies for the future of our waste and recycling programs.

Interested residents should send an email of interest to: [townofbethany@bethany-ct.com](mailto:townofbethany@bethany-ct.com). The deadline is Friday, November 15, 2024.

**Join Our Grant Committee!**

The Town is seeking interested individuals to become members of our Grant Committee! Grants play a vital role in funding projects beyond our annual budget process. If you're passionate about community impact and possess any of the following skills, we want to hear from you:

- Economic development experience
- Grant writing experience
- Project management experience
- Legal/contract experience

Don't worry if you lack some skills! The Board of Finance is dedicated to building a working committee of enthusiastic members and will provide grant writing training to enhance your skills and knowledge of the process.

For more information or to submit a letter of interest, contact us at [finance@bethany-ct.com](mailto:finance@bethany-ct.com).

We would like to hear from you by  
November 15, 2024

A vibrant blue poster for the production of Seussical Jr. The title "Seussical JR." is written in large, bold, yellow letters with a red outline. Above the title is a red and white striped hat with a white pom-pom. Text at the top reads "THE BETHANY SPARTAN PLAYERS SUPPORTED BY THE JAMIE HULLEY ARTS FOUNDATION PROUDLY PRESENT:". Below the title, the performance schedule is listed: "FRIDAY, NOVEMBER 8, 6:30PM", "SATURDAY, NOVEMBER 9, 6:30PM", and "SUNDAY, NOVEMBER 10, 2:00PM". At the bottom, it says "PURCHASE YOUR TICKETS NOW AT: [HTTPS://TINYURL.COM/SEUSSICAL24](https://tinyurl.com/seussical24)" and lists ticket prices: "ADULTS: \$16", "K-12 STUDENTS: \$12", and "CHILDREN UNDER 4: FREE".

With a generous grant from their headlining sponsor, The Jamie A. Hulley Arts Foundation ([jamiehulleartsfund.org](http://jamiehulleartsfund.org)), The Bethany Spartan Players are pleased to announce their production of Seussical Jr., The Bethany Spartan Players look forward to sharing this compelling story based on the beloved characters from the world of Dr. Seuss.

Advanced tickets are available at <https://tinyurl.com/seussicaljr24>.

Tickets are \$16/adult, \$12/student, and children under four are free.

**Convenient Discounted Well Testing  
by UCONN Lab**

Unlike homeowners that have city water, well owners are responsible for testing their own water. Even if your water tastes and smells fine, that doesn't always mean that it is safe to drink.

On Saturday, November 16th, from 10am to 1pm, Uconn's mobile water lab will be parked at Clark Memorial Library.

You may pick up a test kit and return the sample on the same day to the mobile lab. Results will be mailed to you. The cost is \$200.

**NOTICE OF DECISION  
AT THE SPECIAL MEETING OF THE  
PLANNING AND ZONING COMMISSION  
WEDNESDAY, 2nd DAY OF OCTOBER 2024**

Notice of Decision is hereby given at Regular Meeting held, Wednesday, October 2, 2024, at 7:00 p.m. in the commission room located at the Town of Bethany - Town Hall

1. APPROVED - Appl#2024-010 – Applicant/Owner Black Dog Group – Robert Fantarella – 74 Amity Road B&I Zone.
  - a. Placement of new business sign utilizing the existing 4’x4’18’ post.
2. APPROVED - Appl#2024-011 – Applicant/Owner Agnes Crisanti – 52 Glenwood Court – R-65 Zone.
  - a. Home Occupation Permit - kitchen to be utilized for Cottage Use Operation of baked goods.
3. APPROVED - Appl#2024-013 – Applicant/Owner Alan Clement – 12 Clifford Drive – R65 Zone.
  - a. Site Preparation work to include driveway, septic, and grading for future family house.

---

**NOTICE OF DECISION  
AT THE SPECIAL MEETING OF THE  
INLAND WETLANDS COMMISSION  
WEDNESDAY 9TH DAY OF OCTOBER 2024**

Notice of Decision is hereby given at Special Meeting held Wednesday, October 9, 2024, at 7:30 p.m. in the commission room located at the Town of Bethany - Town Hall

1. APPROVED - Town of Bethany – 16 Falls Road – Don Shea – Department of Public Works.
  - a. Appl# 1381 – DPW project under easement for the purpose of replacing a drainage pipe that extends from the culvert and continues through the grantor’s property.

---

**NOTICE OF PUBLIC HEARING  
TOWN OF BETHANY  
PLANNING AND ZONING COMMISSION**

A public hearing will be held at the regular Planning and Zoning Commission meeting scheduled for Wednesday, November 6, 2024, in the Commission Meeting Room of the Bethany Town Hall, 40 Peck Road, Bethany, Connecticut. The regular Planning and Zoning Commission meeting is regularly scheduled to commence at 7 p.m. The Public Hearing regards Application #2024- 012 and on application of Joe Naples (applicant and owner) of property at 667 Amity Road in an existing B&I zone for site plan approval for various improvements: new/added parking, drainage, revision of zoning permit dated 6/29/2016, modification of hours of operations, and addition of field lights at this lo-

cation, for a Special Permit and a site plan approval in accordance with Section 6 & 9 of the Bethany Zoning Regulations. The application and plans are available in the Land Use Department for review during business hours

---

**PUBLIC HEARING NOTICE  
Planning Commission seeks input  
on Economic Development**

The Bethany Planning and Zoning Commission will have an open public meeting which they encourage all interested residents to attend. **The meeting will be held at Bethany Town Hall on November 20th, 2024, beginning at 7 pm.**

The Planning Commission has recently been considering how to initiate some appropriately sized and well-designed economic development in certain areas of the Town and would like to get input from residents about issues that should be considered. The Commission realizes there are many aspects of such an initiative that need to be discussed with the residents and looks forward to having that discussion beginning at this meeting. All ideas are welcome as long as they are based on the theme of moving Bethany forward in this area.

The Commission plans to listen carefully at this initial session and hopes to seek input to a variety of questions aimed at what residents want for Bethany’s future.

Comments from all residents will be heard after a brief presentation on the subject of Bethany’s future land use. Topics will include, but not be limited to, What could Bethany use more of? More civic areas and active recreation areas, or more well-designed commercial areas for shopping and dining? Are more utilities needed or necessary?

Bethany is unique in the planning region. How do we make the most of this difference and yet provide services and dwelling space for all the residents who make up the vitality that is the essence of the Town? The topic of a village center and what that means will be discussed and the specifics of such an undertaking will be available. What advantages does Bethany currently have that it can build upon? What aspects of the rural community that all residents appreciate should be protected and what aspects can be improved to make residents’ daily tasks a bit easier?

The Commission hopes for a good turnout and a lively discussion on November 20 at the Town Hall. If you have any questions in advance, feel free to call the Bethany Land Use Office before November 20th.

*Sincerely, The Planning and Zoning Commission & Town Planner, Hiram Peck.*



# BETHANY HOOPS

Bethany Parks & Recreation is excited to announce the return of our youth basketball league starting this December and January and running through mid-March.

These developmental programs help introduce players to the game, while they learn about sportsmanship, teamwork, and healthy competition.

## TEAMS & SCHEDULE:

### K-1 Boys & Girls

(Beginners, clinic-style)

Monday 5:30-6:30 PM

\$100/season

Starts in January

### Grades 2-3 Co-Ed

(Mostly clinic-style, no teams)

Tuesday 5:30-6:30 PM

Saturday 9:00-10:30 AM

\$150/season

Starts in January

### Grades 4-6 Girls

(Teams rotate within the time block.  
Games TBD with other towns)

Thursday 5:30-7:00 PM

Games TBD

\$100/season

Starts in December

### Grades 4-6 Boys

(Teams rotate within practice during the week.  
Scores kept for games. Tournament at the end  
of the season)

Monday/Tuesday 6:45-8:15 PM

Saturday 10:45-12:15 or 12:30-  
2:00

\$150/season

Starts in December

## LOCATION:

Sessions will take place at Amity Middle School, Bethany. Enter through the far door on the right side of the building.

**TO REGISTER, GO TO [BETHANYCT.MYREC.COM](http://BETHANYCT.MYREC.COM)**

**NO REFUNDS ONCE ENROLLED**



# CHRISTMAS BAZAAR & CRAFT FAIR

## At Our Lady of Assumption Church

81 Center Road, Woodbridge

Sponsored by our Parish Ladies Guild

**Saturday November 16, 2024**

**9:00am- 3:00pm- Free Admission**

Come join us for a fun, relaxing, shopping experience! Over 30 tables of Unique Vendors and Crafters

### **Fabulous Homemade Bake Sale**

Breakfast, Lunch and Snack selections for purchase served by the Knights of Columbus

Santa for photos (11am – 2pm)

Children's free Craft Room

White Elephant Sale

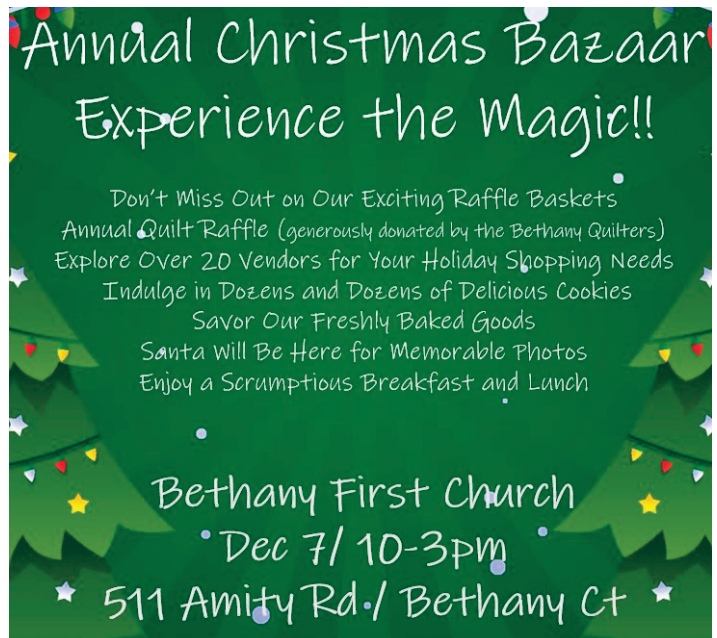
Many Generous Raffle Baskets

Children's Choir caroling at noon

Christmas Train display returns!

trains running all day

Questions to: [oloaguild@gmail.com](mailto:oloaguild@gmail.com)



### **INFO FOR PUBLIC WORKS**

For road/tree issues call:

475-238-6966

PW Hours: M-F 7a.m.-3p.m.

For recycling/bulk waste call:

203-393-1555

R/BW Hours:

Tues. - Sat. 7:30a.m.-3:00p.m.

## **Town of Bethany Monthly Meeting Schedule**

November 5th	Board of Selectmen	6:30PM
November 6th	Planning and Zoning Commission	7:00PM
November 11th	Amity Board of Education	6:30PM
November 12th	Board of Finance	6:30PM
November 12th	Zoning Board of Appeals	7:00PM
November 13th	BCS Bethany Board of Education	6:30PM
November 13th	Economic Development Commission	6:30PM
November 14th	Conservation Commission	7:30PM
November 18th	Inland Wetlands Commission	7:30PM
November 19th	Parks and Recreation Commission	7:00PM
November 21st	Cemetery Commission	7:00PM

Meetings may change: Check [Bethany-ct.com/virtual-bulletin-board](http://Bethany-ct.com/virtual-bulletin-board) for up-to-date information.

## BETHANY HARVEST FESTIVAL

The Bethany Harvest Festival Committee would like to thank Mother Nature for the beautiful day she gave us on Sunday, October 6<sup>th</sup>! We had record attendance and hope that everyone who was able to be there had a great time!

We'd like to thank all our volunteers and vendors for making the day such a success with special thanks to the Bethany Department of Public Works, the Bethany Volunteer Fire Department, the Bethany Athletic Association and everyone at Bethany Town Hall who lent a hand.

Last but certainly not least, thanks to all the local businesses whose financial support made the Festival possible –

<b>LATICRETE INTERNATIONAL</b> <b>BETHANY LIONS CLUB</b> <b>COUNTRY COMPANIONS VETERINARY SERVICES</b> <b>GREEN LIGHT AUTO SALES</b> <b>LOCK, STOCK &amp; BARREL</b>		
B & B Transportation		Paula Cofrancesco
Bethany Mountain Lawn Care		Out on a Limb
Carol Cangiano, Realtor		Webster Bank
Amity Gardens	Joe Cafasso, Realtor	Republican Town Comm
AT Sangha Yoga	Democratic Town Comm	April Stirling, Realtor
Bethany Fuel	Harkness Tree Services	Verab Greenhouses
Bethany Guitars	Irma Nesson, Realtor	W.R Grieger
Bill Marek Excavating	Jim's Landscaping/Excav	Woodbridge Soccer Club
Bronson, Rice & Simon	NJM Landscaping	
Apizza Grande/Billy's Old Fashioned Ice Cream/Elm City Trailer/Johnson & Sons Party Rentals Steven's Deli/Teddy B's/The Fournier Law Firm		

### THE BETHANY HARVEST FESTIVAL COMMITTEE

Janet Brunwin, Tony Ciarleglio, Brent Ciccarella, Carol Goldberg, Clark Hurlburt, Sue Hurlburt, Steve Kirschbaum, Raji Kompalli, Joe Masulli, Dave Merriam, Tom Sansone

### NOTICE FROM THE TAX COLLECTOR

Please be advised that Webster Bank will no longer be accepting January or July tax payments at their branch. This change has been implemented at the request of our auditors to bring the department into compliance.

We kindly ask that payments be made at the towns website [www.bethany-ct.com](http://www.bethany-ct.com) (No fee for ACH payments), in the Tax Office during the hours of 8:30 – 4:00, or mail checks to: Bethany Town Hall, Attn: Tax Collector, 40 Peck Road, Bethany, CT 06524.

As a reminder – Supplemental Motor Vehicle, the second installment of Real Estate and Personal Property taxes are due on January 1, 2025. The last day to pay without interest is February 3, 2025. No bills will be mailed out for second installments of Real Estate and Personal Property. Please provide your bill number with your payment.

Linda Bates, Tax Collector



**BILL MAREK**  
**EXCAVATING & SEPTIC SYSTEMS LLC**

- SEPTIC SYSTEMS INSTALLED & REPAIRED
- SEPTIC TANKS CLEANED
- PERCOLATION TESTS & REAL ESTATE INSPECTIONS
- EXCAVATING WORK

**(203)-410-1137**




**APRIL STIRLING** Realtor®  
 Stirling Service is my Gold Standard!

**Coldwell Banker Realty**  
 270 Amity Road  
 Woodbridge, CT 06525  
 Cell: 203-910-8078  
 aprilstirlingrealestate.com

**W. R. GRIEGER**  
**EXCAVATION**  
 WWW.GRIEGEREXCAVATION.COM



Since 1980  
**(203) 393-1392**

- SEPTIC SYSTEMS REPAIRED AND INSTALLED
- SEPTIC TANK CLEANING & INSPECTIONS
- SOILS TESTING & B100
- REMOVAL OF INGROUND OIL TANKS

**Calcagni**  
 REAL ESTATE

**Irma Nesson**  
 ABR, CRS, GRI, REALTOR  
 Bethany Resident since 1972.

*Multi-year recipient of Connecticut Magazine's Five Star Real Estate Agent Award.*



📞 203-671-1706    ✉ Irma\_Nesson@calcagni.com

Town of Bethany  
 40 Peck Road  
 Bethany, CT 06524

PRSRT STD  
 ECRWSS  
 U.S. POSTAGE  
 PAID  
 EDDM RETAIL



HOULIHAN LAWRENCE  
 WARECK D'OSTILIO

# Selling?

**I HAVE BUYERS WAITING!**



**Heidee Garcia Pestana**  
 Bethany Resident

📞 (203)543-9408  
 ✉ hgarciapestana@houlihanlawrence.com  
 📍 378 Amity Rd, Woodbridge, CT. 06525




**Bethany Fuel**  
*affordable home heating oil*

**203-308-4OIL**  
**bethanyfuel.com**

HOD1201

**LOCAL  
 POSTAL CUSTOMER  
 BETHANY, CT 06524**